

The *little* Gallery *on the farm*

Southcombe Farm, Shebbear, Devon, EX21 5RF 01409 281122

www.littlegalleryonthefarm.co.uk

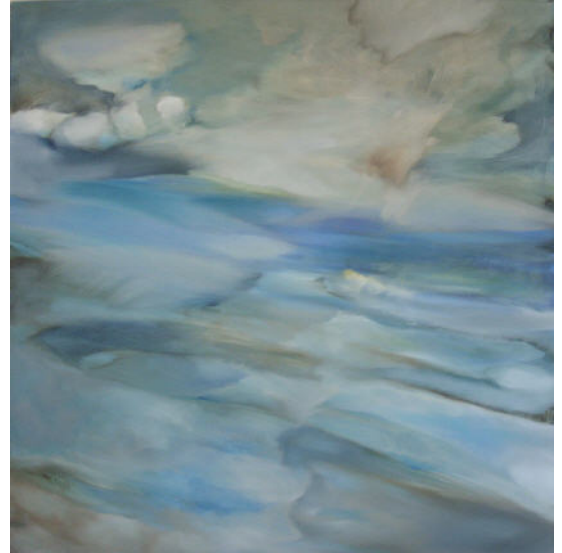
Open Weds to Sat 10 to 5 Sundays and Bank holidays 11 to 4

Upstream

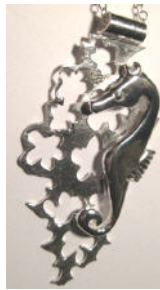
The gallery re-opens on Wednesday 10th February with 'Upstream' an exhibition of work by members of the Bideford Bay Creatives. The show features work by nine members of the group who are all artists and makers based in the area around Bideford, Northam, Westward ho! And Appledore www.bbcdevon.org This varied show includes paintings by Janis Glover, Duncan Hopkins and Gillie Jackson, dramatic photography by Mike Bentley and Dave Green, prints by Rosie Burns, drawing by Sarah Woolfenden and exquisite jewellery by Kim Styles and Raz Scott Oliver. There will be an opportunity to talk to some of the participants at "Meet the artist" on Sunday 21st February 2-4pm. The exhibition runs until 14th March.



Dave Green



Duncan Hopkins



Silver Jewellery by Kim Styles

Art Trek Open Studios

This year we are again taking part in Art Trek, the North Devon Festival's Open Studios event. This year the event will be running over three weekends in June, starting 11th to 13th, 18th to 20th and 25th to 27th. The gallery will also be open on Wednesdays and Thursdays during the whole event. Our line up, at time of writing, is Liane Tancock a young artist who paints colourful impressionistic landscapes in oils of the coast and the area around Holsworthy and Bude, Sarah Boait, gallery proprietor who will be showing her photographs and her experimental photo-sculptures and our resident artist oil painter Neil Jeffers. We still have space for another artist to join us, so check nearer the time for final details.



Across the beach Liane Tancock

Review of 2009

Lots of visitors, our first Art Trek, first coach party, first school visit from class 2 of Shebbear Community School, and what we hope to be the first of an annual exhibition "Wood use and Inspiration" This years wood exhibition will start in September date to be confirmed.

New Look Website

Our website will be having a makeover in the coming months. The aim for this is to make it easier to use, increase the range in our online shop, improve information for visitors with better maps and info on green travel options, provide more up to date information about artists and work in the gallery. The changes will be introduced gradually and we are happy to receive any comments or suggestions for improvements. sarah@littlegalleryonthefarm.co.uk

Please see our website for further details of the above and more recent additions to the gallery.